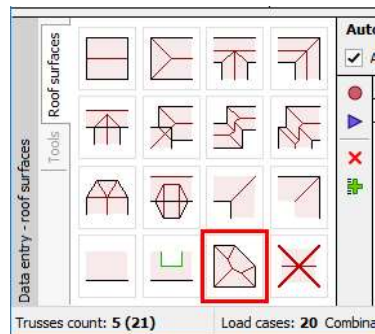


Truss4 version 12

The company Fine Ltd. is pleased to announce the release of Truss4 version 12. This version contains following new features:

Roof surfaces for general polygon

The part "Roof" of the tree menu contains a new tool "Roof surfaces for general polygon". This tool is able to create complete roof for polygon made by selected walls. The use of this tool is similar to other tools in this part. Before using this tool it is necessary to select walls which form a polygon.

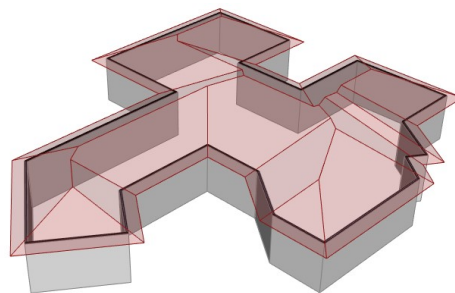


The tool "Roof surfaces for general polygon"

Current version of this tool has following limitations:

- Walls have to form a polygon
- The fascia height has to be identical for all walls in the polygon
- Only one pitch per one wall is supported at this moment

The general polygon can be added as a particular step into a macro and can be combined easily with other steps (extensions etc).



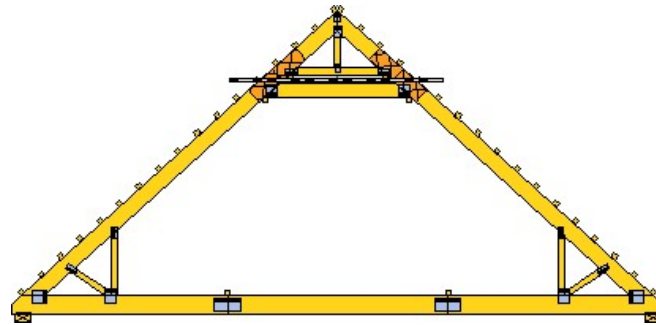
Roof for general polygon

Switching off load transfer for particular load cases

The tab "Special" of load case properties contains a new setting "Load transfer – do not transfer loads between trusses in this load case" which takes out the load case from automatic load transfer between trusses and girders. This feature should be used for maintenance loads which are represented by point forces.

Division of attic trusses

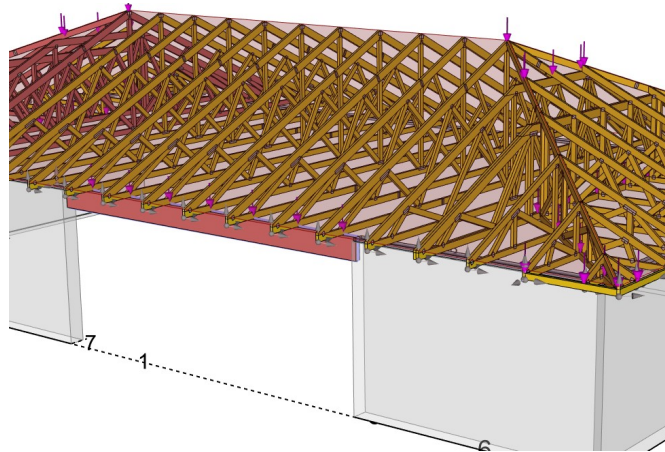
The attic trusses can be divided automatically by the software according to the specified maximum height of the truss. The settings which affect this feature are placed in the tab "Truss division" of the "Design options". The software also automatically modifies the position of collar beam according to the specified attic height and the depth of bottom chord.



Divided attic truss

Load transfer from trusses to beams

The load transfer from bottom chords of trusses to beams is performed automatically in the new version. The beam has to be created as "**bottom chord**". The orientation of load transfer is selected according to the height difference. The loads from bottom chords in higher level are transferred to beams in the lower level.



Load transfer from trusses to beams

Truss generator in tree menu of Truss 2D

The starting wizard "**Truss generator**" can be launched once again for existing truss with the help of the new item "**Generate**" in the tree menu.

Changes in files for DePauw saw

The names of files for DePauw saws are DOS-compatible now. The file *Disk.cfg* was added.

German version

The German version was released.